

SITE AREA = 9.78 ACRES (39578.25 SQ.M)
 SITE LOCATION : DURGA FARM SEED ,DHAROL,HIMACHAL PRADESH

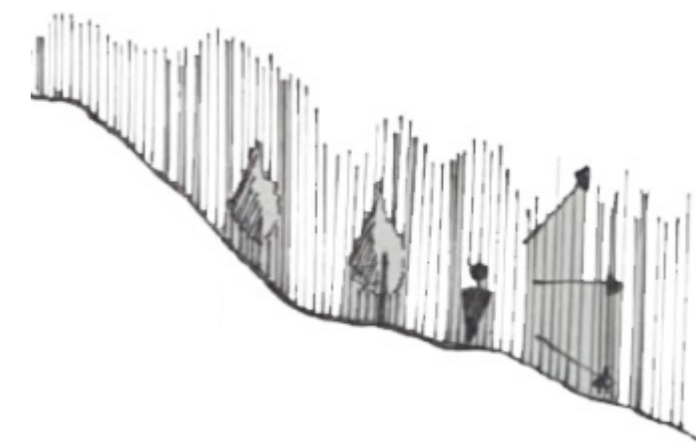
TRANSPARENCY WITHIN THE LAP OF HILLS

So as the word says it all. Transparency is a border between the eye vs the mind .The difference between eye seeing a space is different from what the mind reads.

The literal or perceptual transparency plays with the eye of the user whereas the phenomenonal transparency plays with the mind of the user.
 Through this type of housing units the engagement of the mind of the user is been kept into mind.



Planning of site and placement of blocks is placed keeping in mind the transparency of the user with nature ,as the site itself blends out to give maximum views.



The transition from vehicular-green park- pedestrian, gives the experience of travelling along with natural landscaping on site itself.

The shared lawn concept is promoted to ensure the transparency between the neighbourhood.



The pedestrian pathways connected to building blocks and green spaces have a combination of steps and ramps to reach the desired height through the slope.

Lawn area on the ridge acts as a landscaping point as it gives out the maximum views of the whole site.

SITE PLAN

LEGEND

- Vehicular circulation
- Green park
- Pedestrian movement
- 3BHK Housing units
- 2BHK Housing units
- 1BHK Housing units



SECTION BB'



MODULE FOR 1BHK HOUSING UNIT

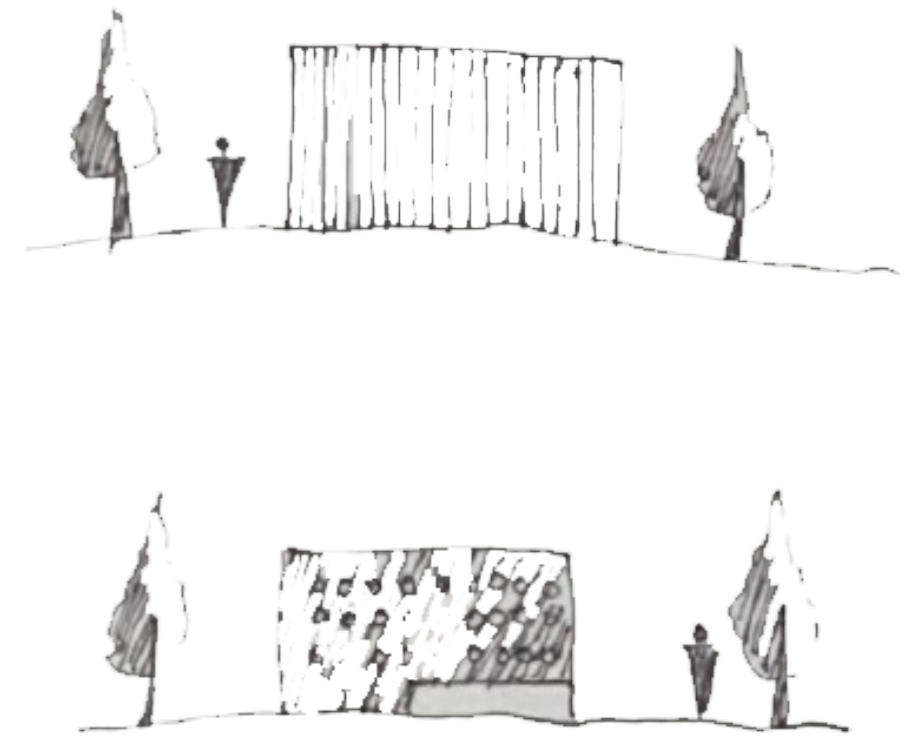


KEY PLAN SHOWING ALL THE 1BHK UNITS PLACED ON SITE.

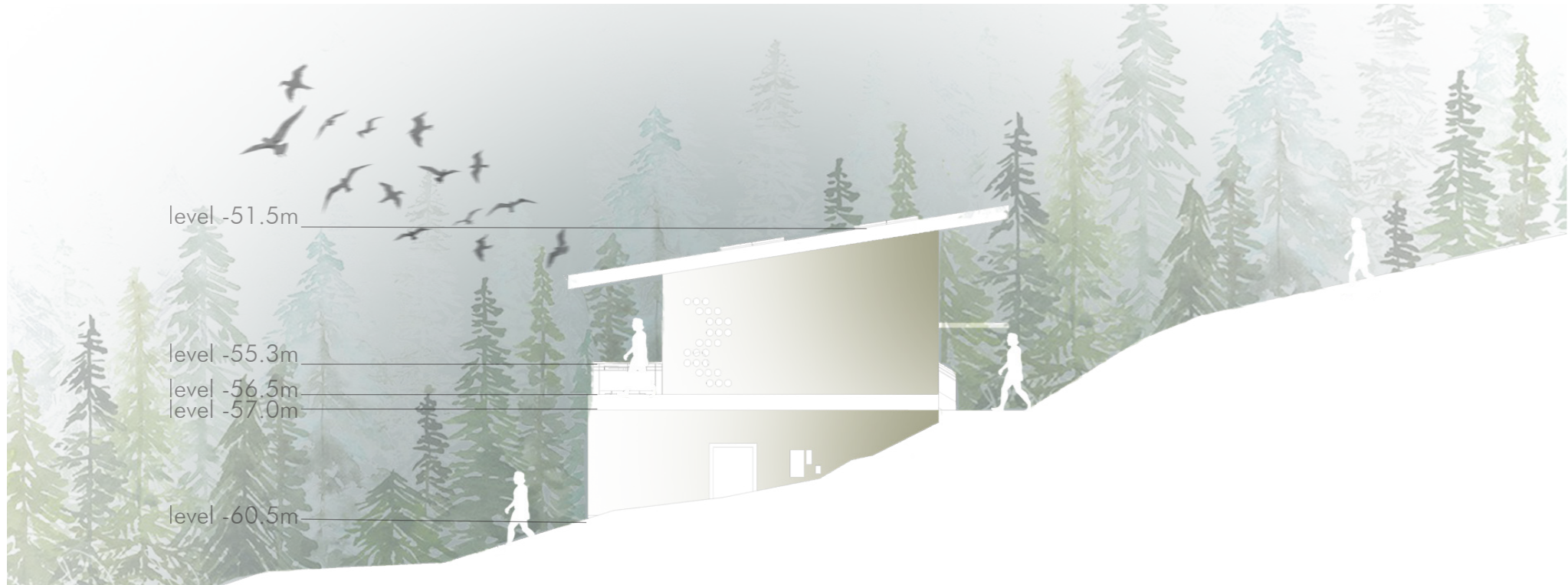
The housing units itself are designed to make the user feel the transparency with nature.

The wooden panels creating a barrier between exterior and interior spaces, yet not breaking the perceptual transparency of mind. This way the views extends from terrace to the living spaces itself.

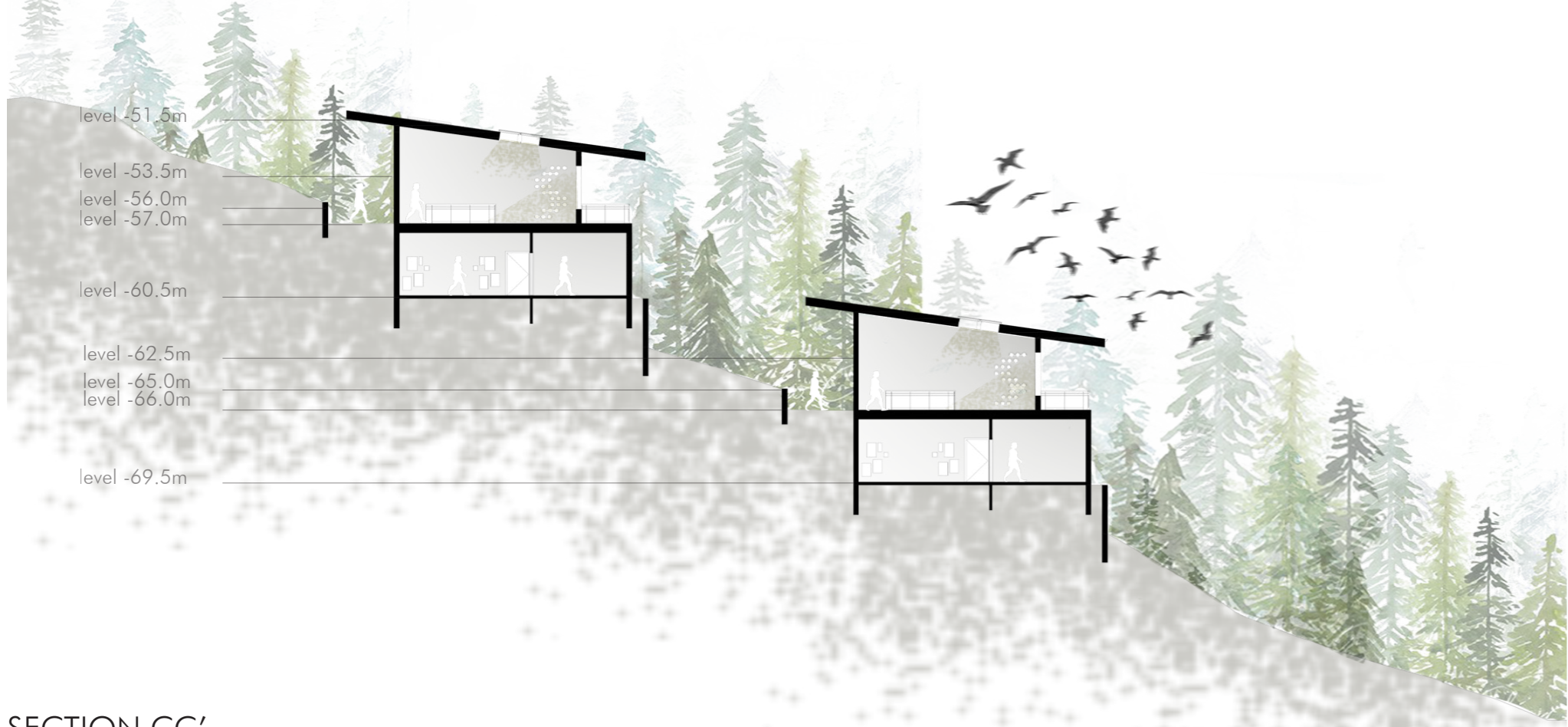
The perforations in walls lets the filtered light entering into the house, making the massiveness and opaqueness of the wall corrode down creating the fading away of light texture. Hence this way the mind sees it as dissolution of wall solidity.



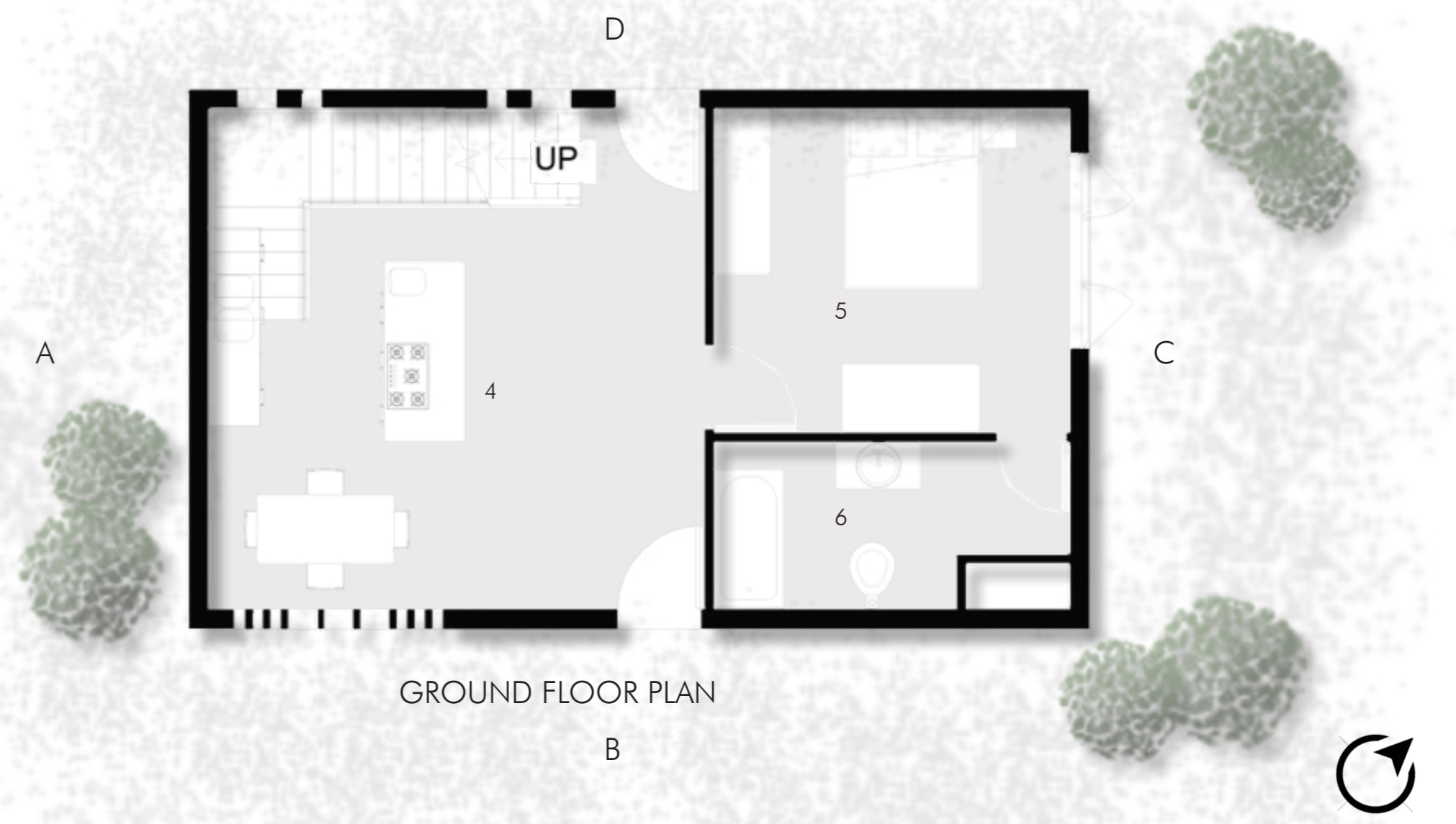
ELEVATION B



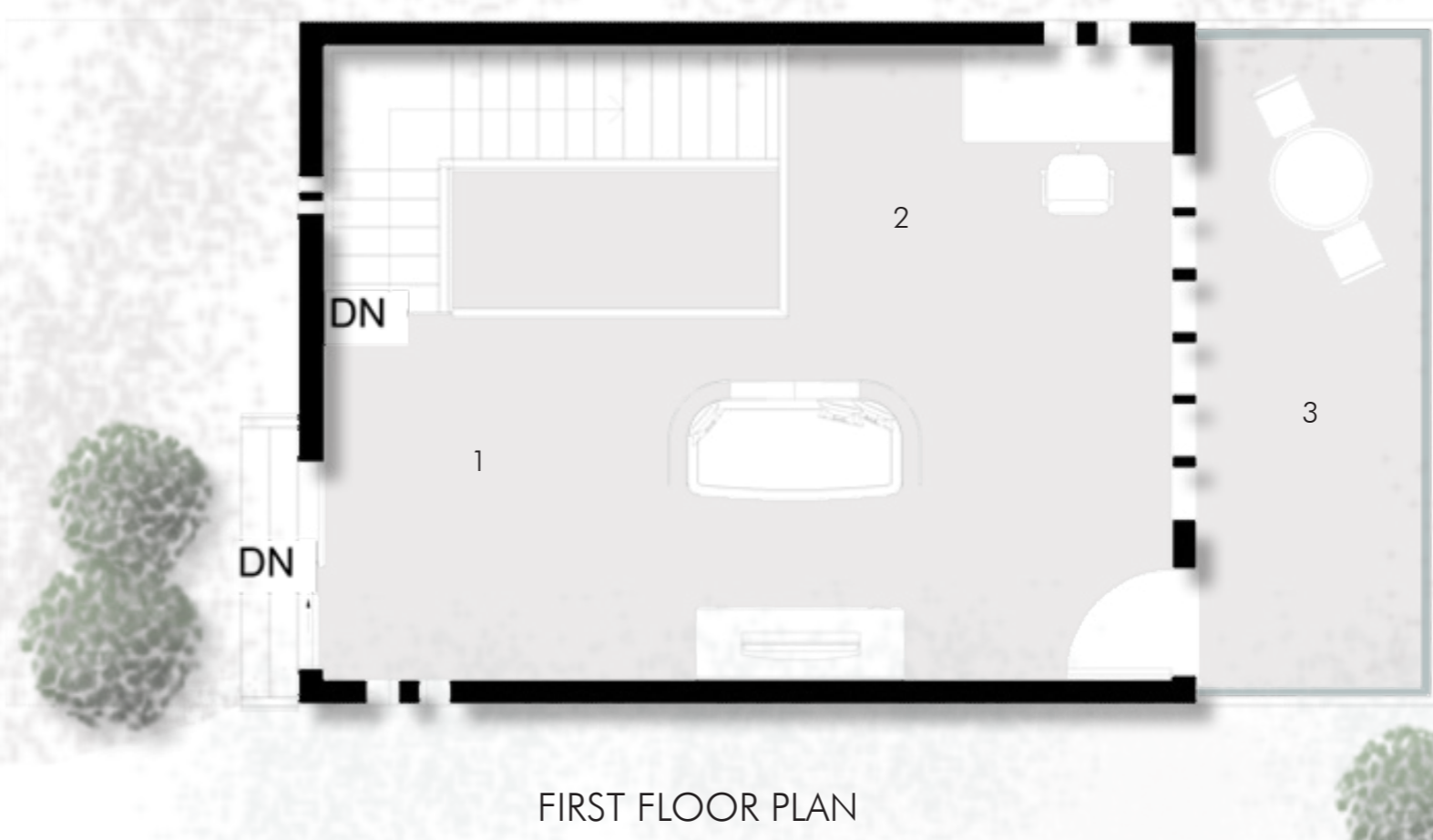
ELEVATION D



SECTION CC'



GROUND FLOOR PLAN

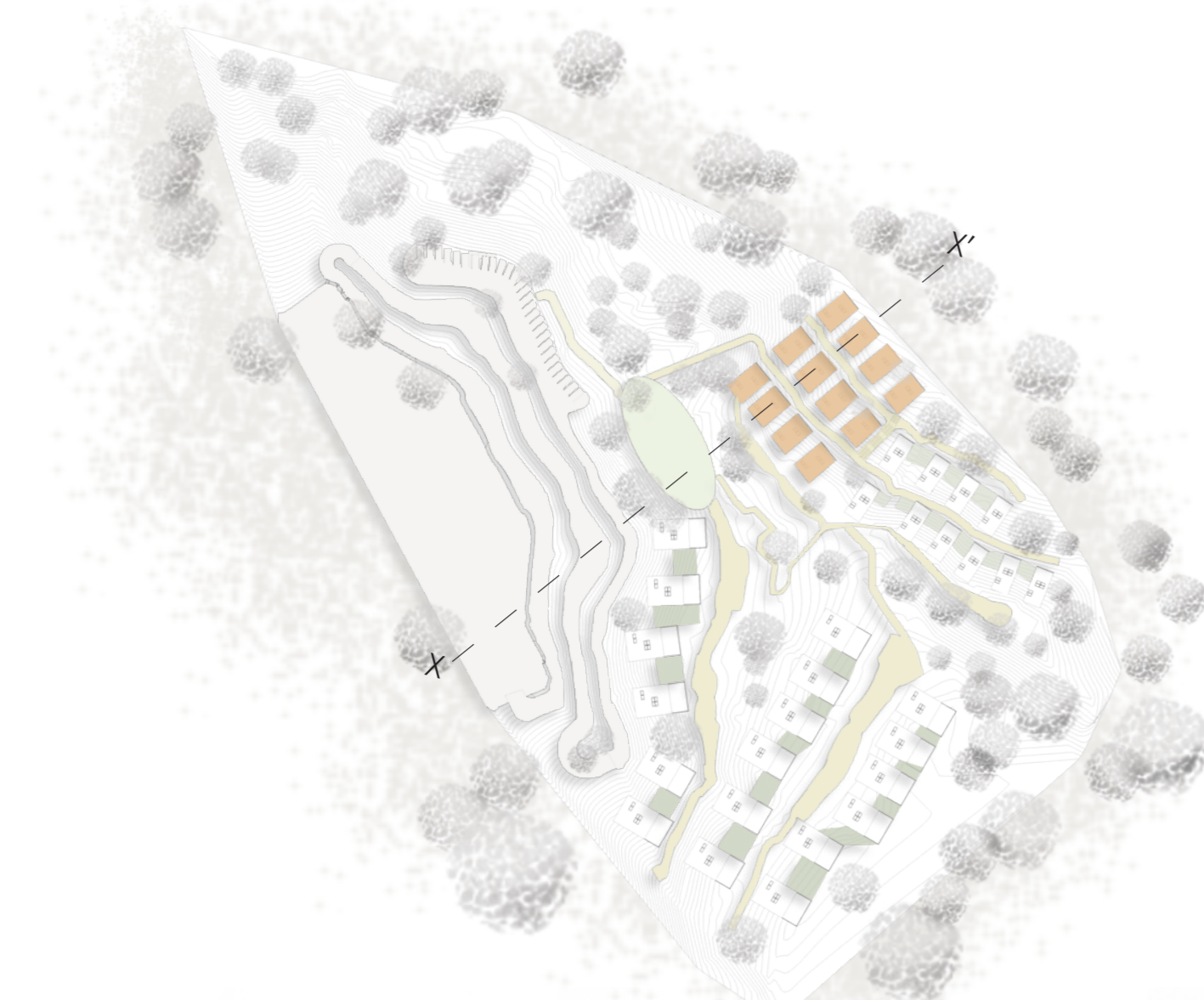


FIRST FLOOR PLAN

LEGEND
 1. LIVING SPACE 2. STUDY AREA 3. OPEN ROOF TERRACE 4. DINING - CUM - KITCHEN
 5. BEDROOM 6. TOILET



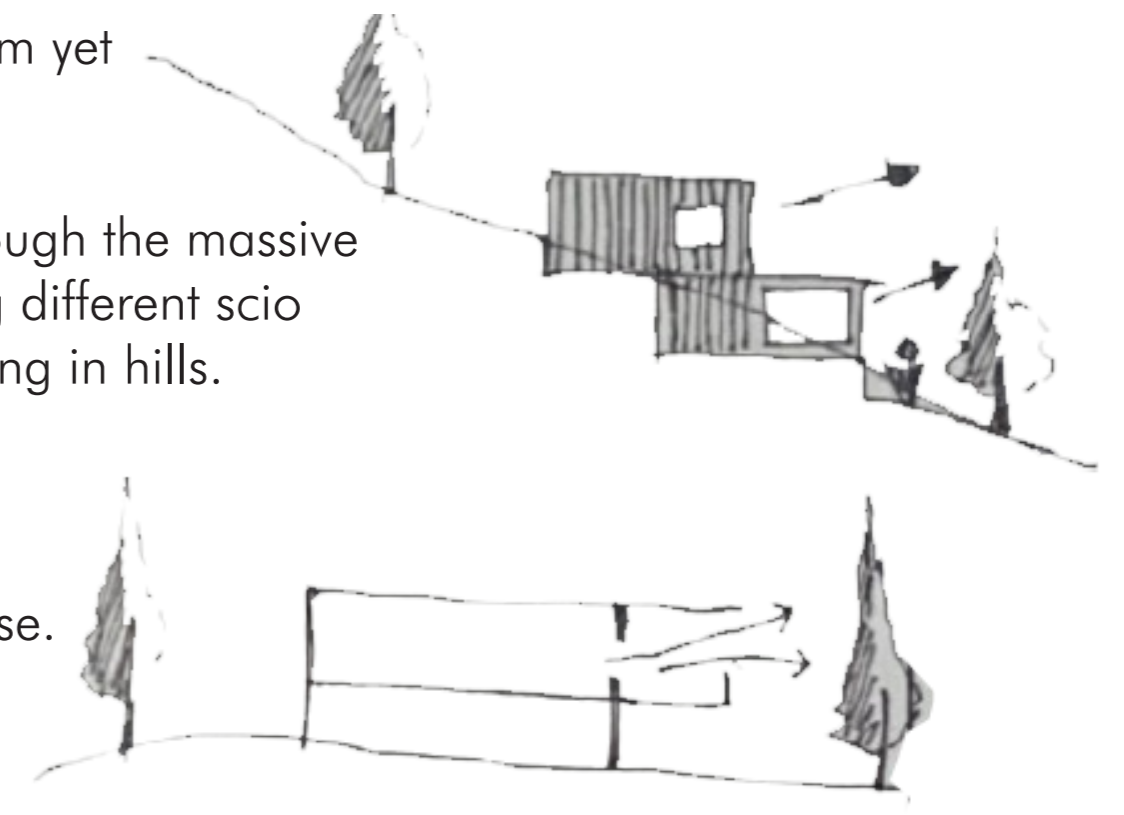
MODULE FOR 2BHK HOUSING UNIT



The slit windows in bedroom provides filtered light coming into the bedroom yet maintaining privacy of the user.

The carved voids in dining and living spaces allow the light to corrode through the massive concrete walls. These voids create the perceptual transparency by creating different scio patterns on floor. The views from bedroom provide the experience of residing in hills.

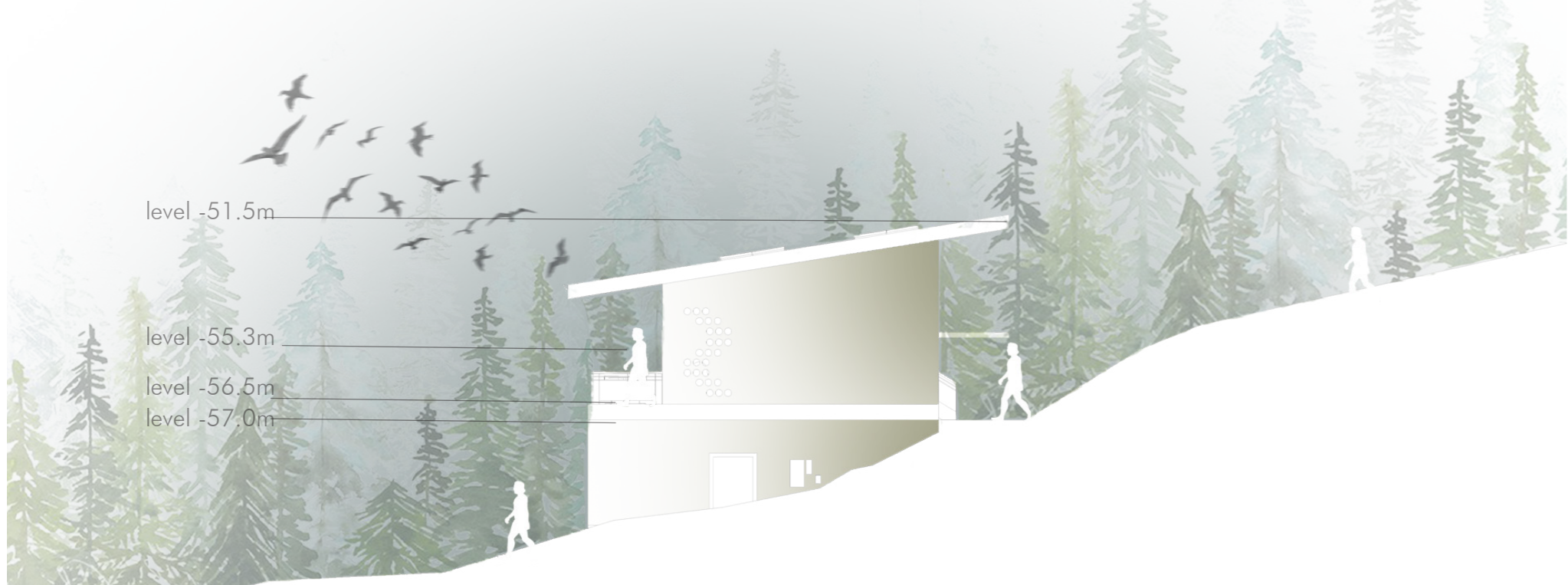
The terraces projects outwards giving the views from three sides of the house.



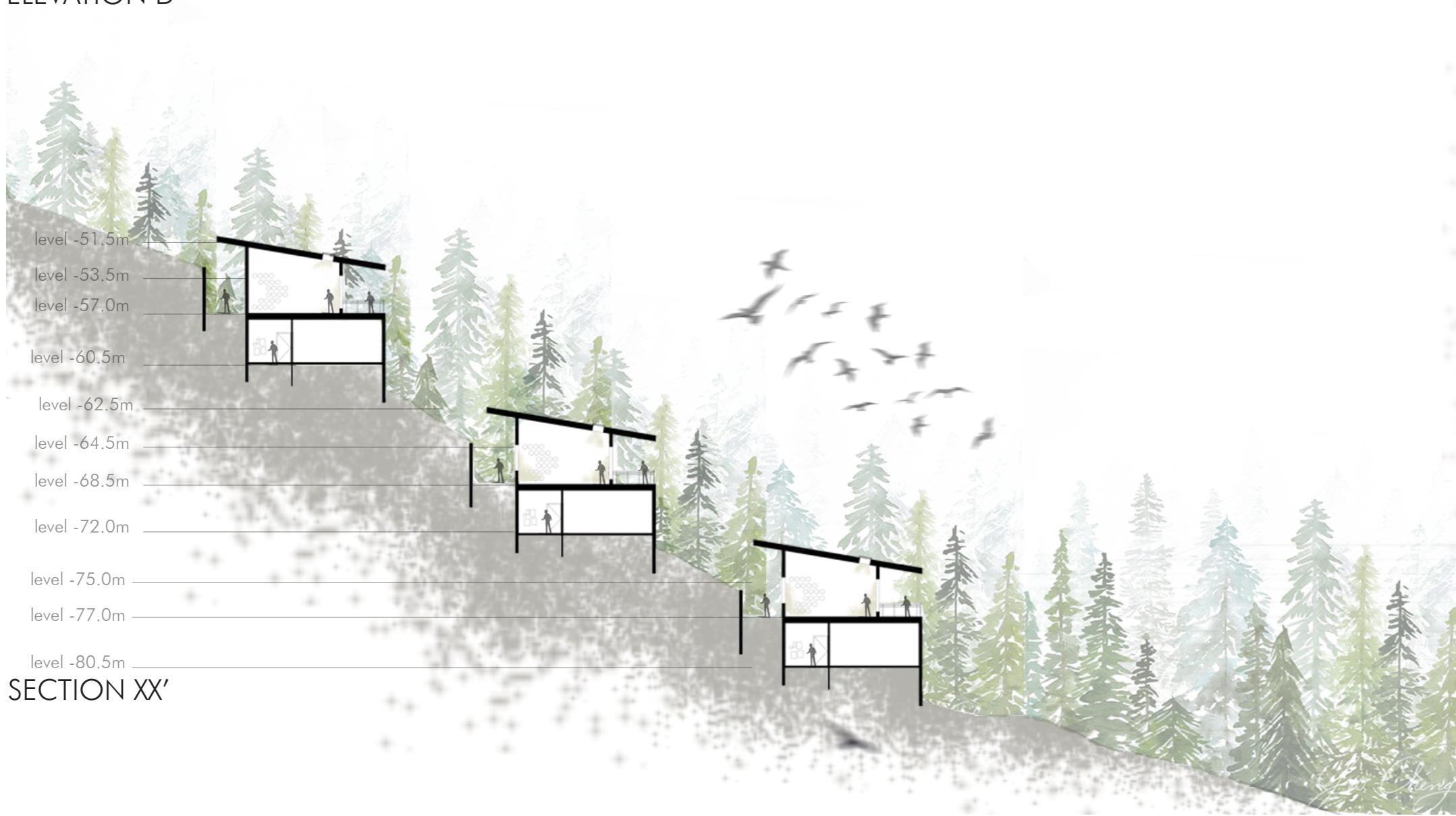
KEY PLAN SHOWING ALL THE 2BHK UNITS PLACED ON SITE.



ELEVATION B



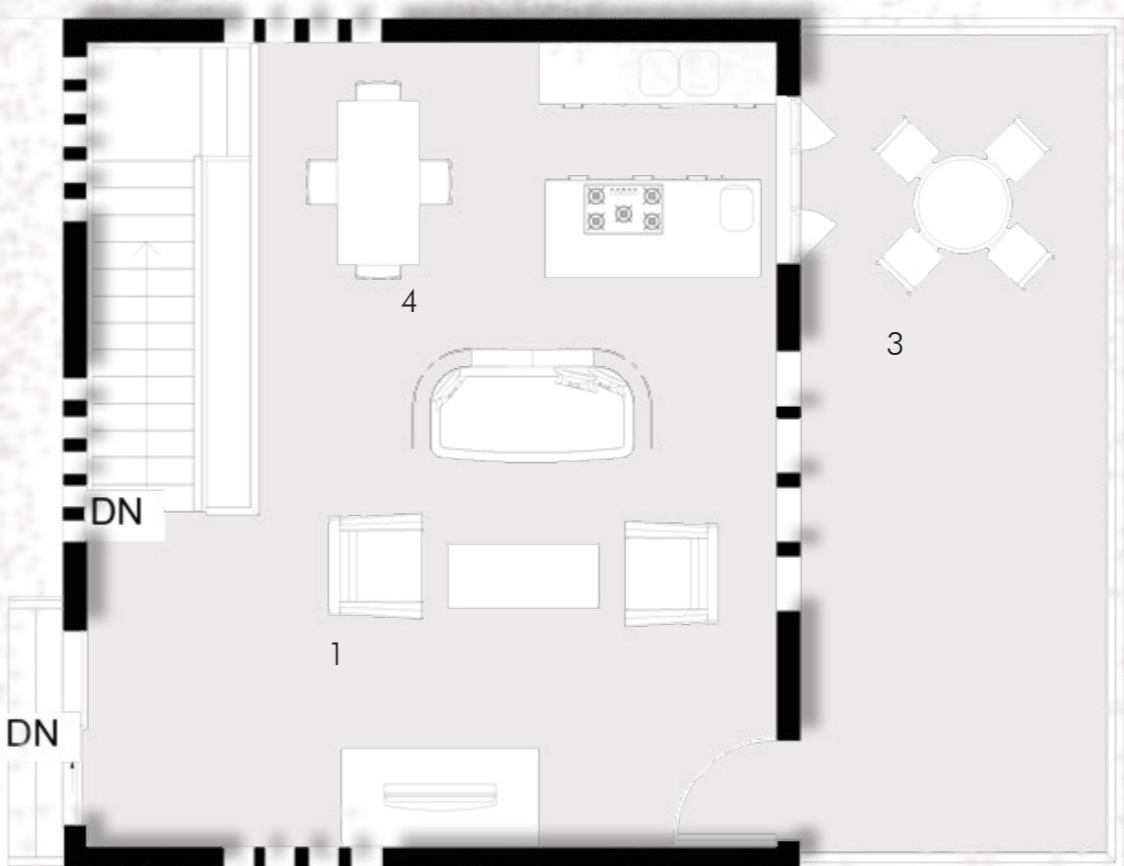
ELEVATION D



SECTION XX'



GROUND FLOOR PLAN



FIRST FLOOR PLAN

- LEGEND
- 1. LIVING SPACE
 - 2. STUDY AREA
 - 3. OPEN ROOF TERRACE
 - 4. DINING - CUM - KITCHEN
 - 5. BEDROOM
 - 6. TOILET



MODULE FOR 3BHK HOUSING UNIT

The provision of skylights enables a dead space to get illuminated and this illumination of light again is the transparency through light and air.

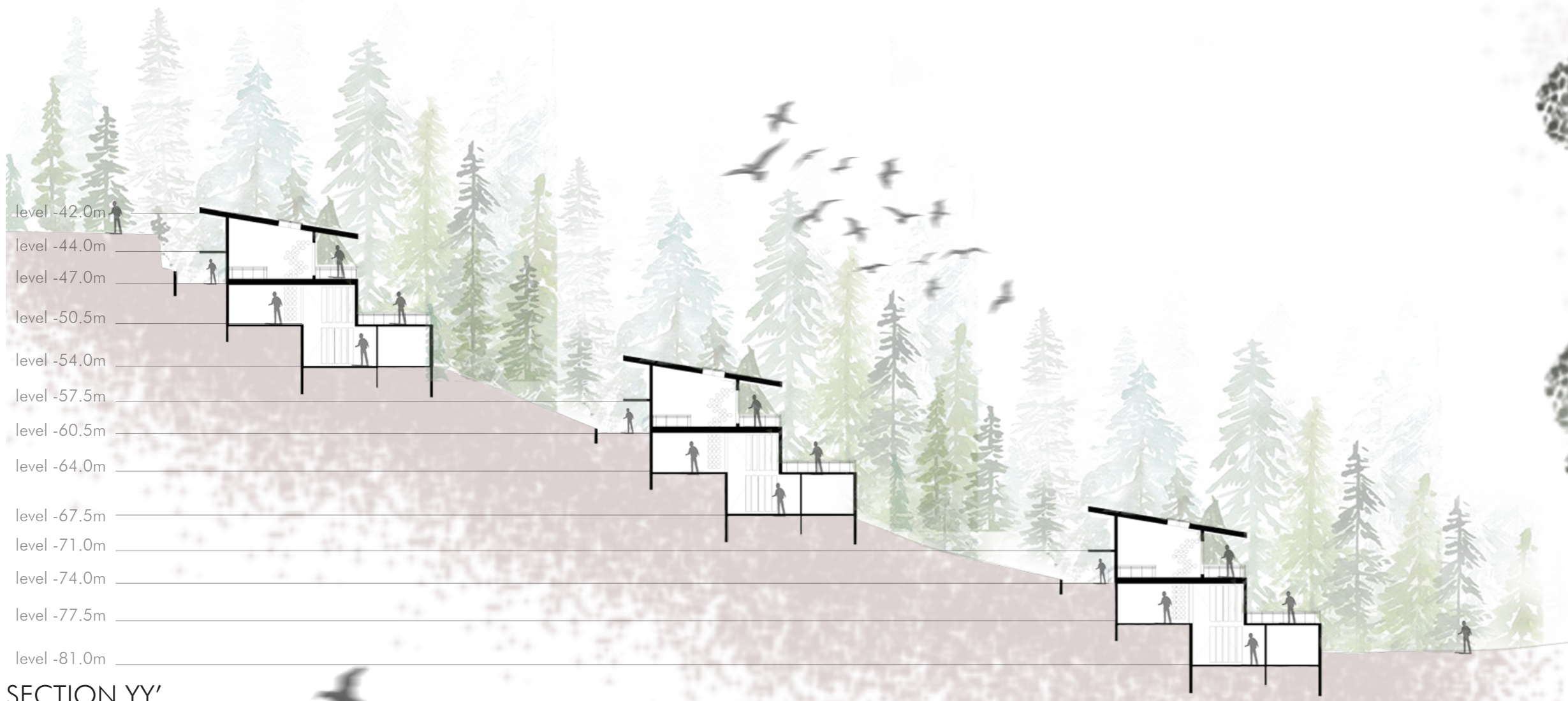
The movement of air in the house from these skylights/slits in roof makes the articulation of air in the house itself.

The double height in this unit shows transparency through different levels. These levels provide the human interaction on different zones.

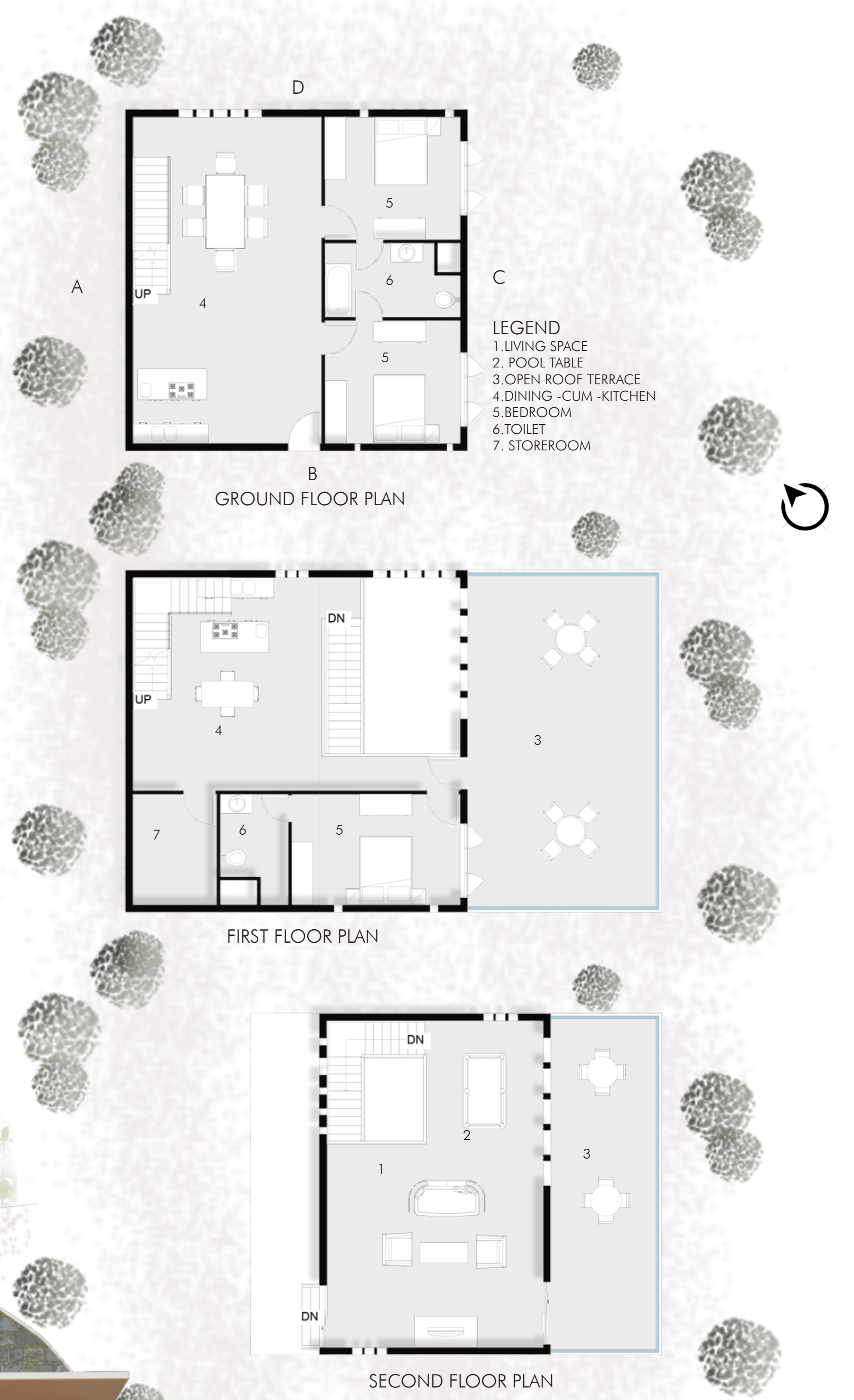
KEY PLAN SHOWING ALL THE 3BHK UNITS PLACED ON SITE.



ELEVATION B



SECTION YY'





SHARED LAWNS



GREEN PARKS



LANDSCAPING POINT AT TOP



PEDESTRIAN PATHWAY



SITE VIEWS

These views depicts the movement of the user through the site alongwith landscaping been provided.

INTERIOR VIEWS

These are some views showing the conceptual elements been put up while designing these housing units on hills.

