

CONCEPT

Symbiosis with nature

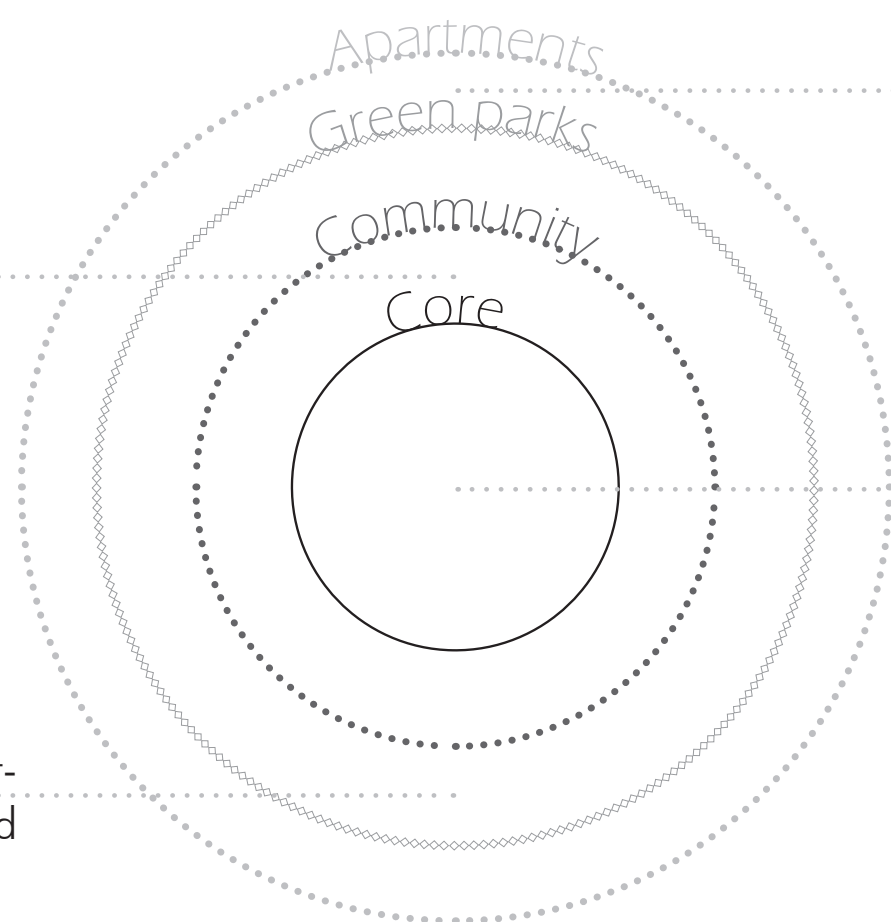
The concept of symbiosis stands for the community interaction between the people of different groups. This community interaction is further linked with nature so as to establish an identity of the site with the surrounding context.



Horizontal

Concentric site planning
4 loops of community interaction

These loops are inspired from the garden city concept of Ebenezer Howard



2nd loop is containing the community spaces like the clubhouse, shops and market places.

3rd loop is the green belt existing between the apartments and the community spaces.

4th loop is the apartments surrounded by green belts so as to cater to the view of the building and privacy from the surrounding context.

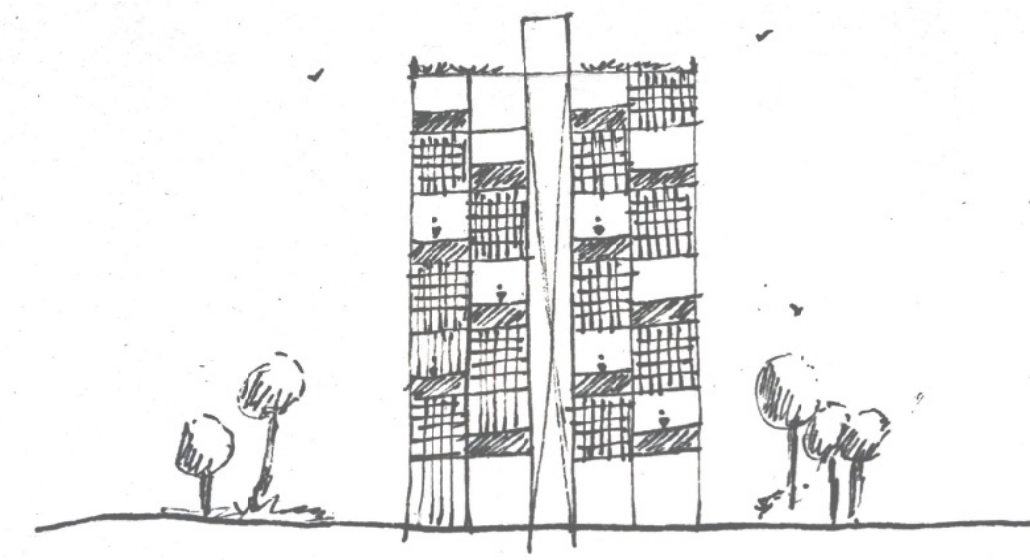
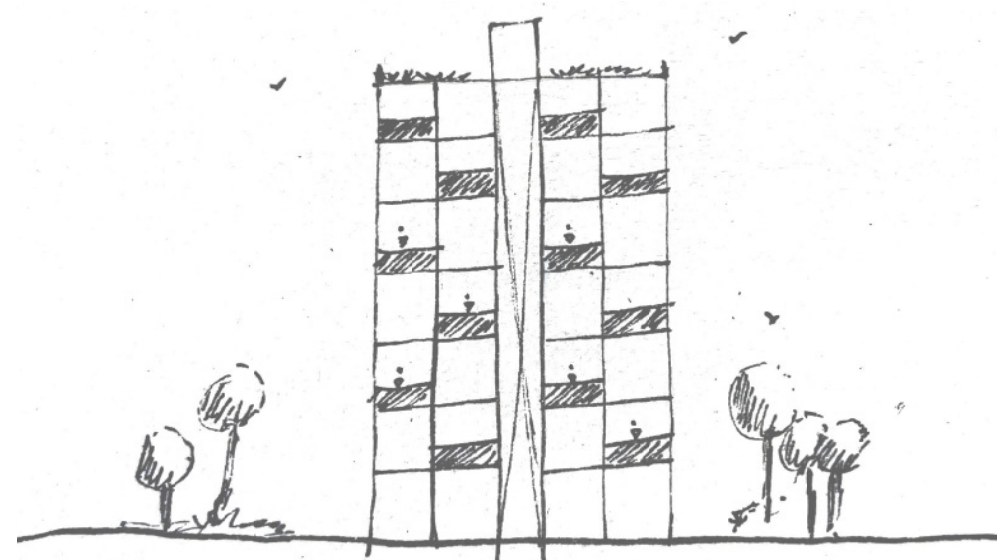
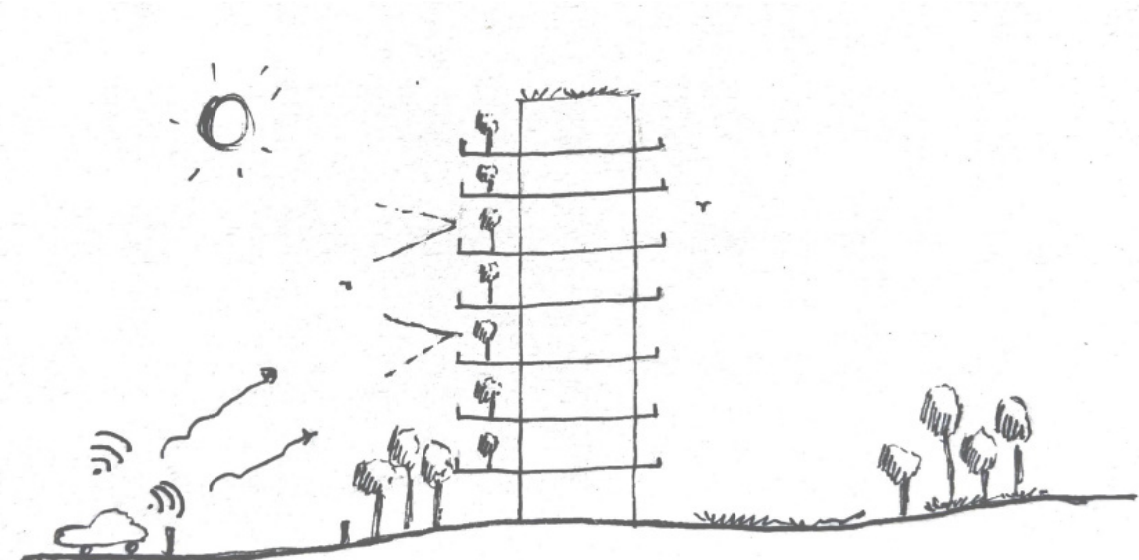
1st loop is the core of the site with landscaping features over the ditch of 2m existing on the site.

AREAS

	No. of storeys	No. of units	Areas(in sq.m)
4BHK	14	112	237
3BHK	8	128	151
2BHK	15	240	100
1BHK	6	48	53
Total units:		528	

Vertical

Social interactions along vertical side, keeping in mind the privacy of the people has been put forward. Following elements have been thought of as per site analysis.



1. Green roof terrace, helps in cooling down of building. (Due to harsh sun exposure)

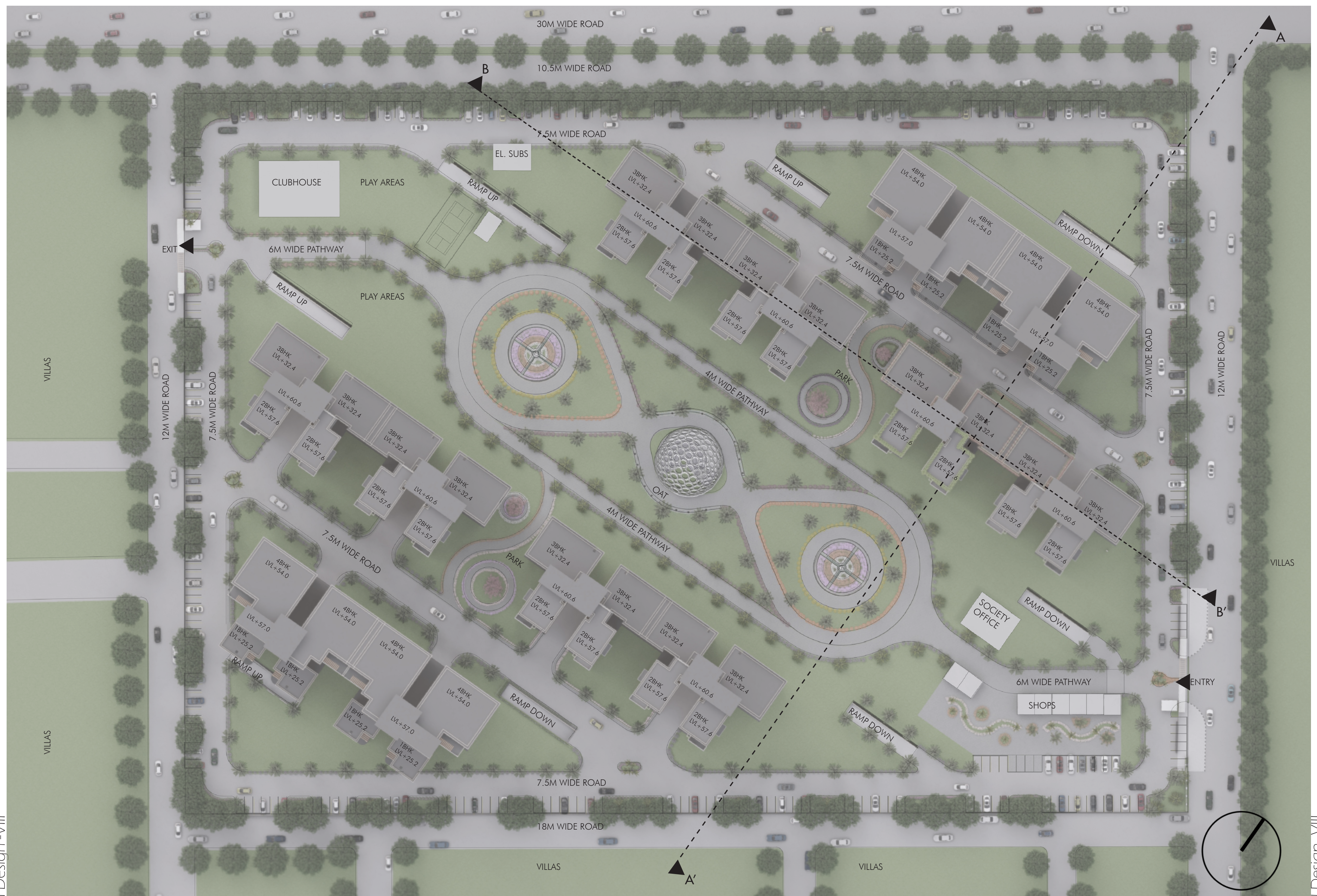
2. Garden spaces as buffers for privacy and noise control coming from main road.

3. Alternate balconies, the concept of alternation of balconies establishes an identity of its own in the facade of any building, in this case it will develop social interactive communication among the people at different floor levels.

4. Alternate louvers, louvers can be used to cater to the harsh sun on facade.



SITE MODEL VIEW



SITE PLAN
SCALE 1:1000



SECTION AA'
SCALE 1:1000



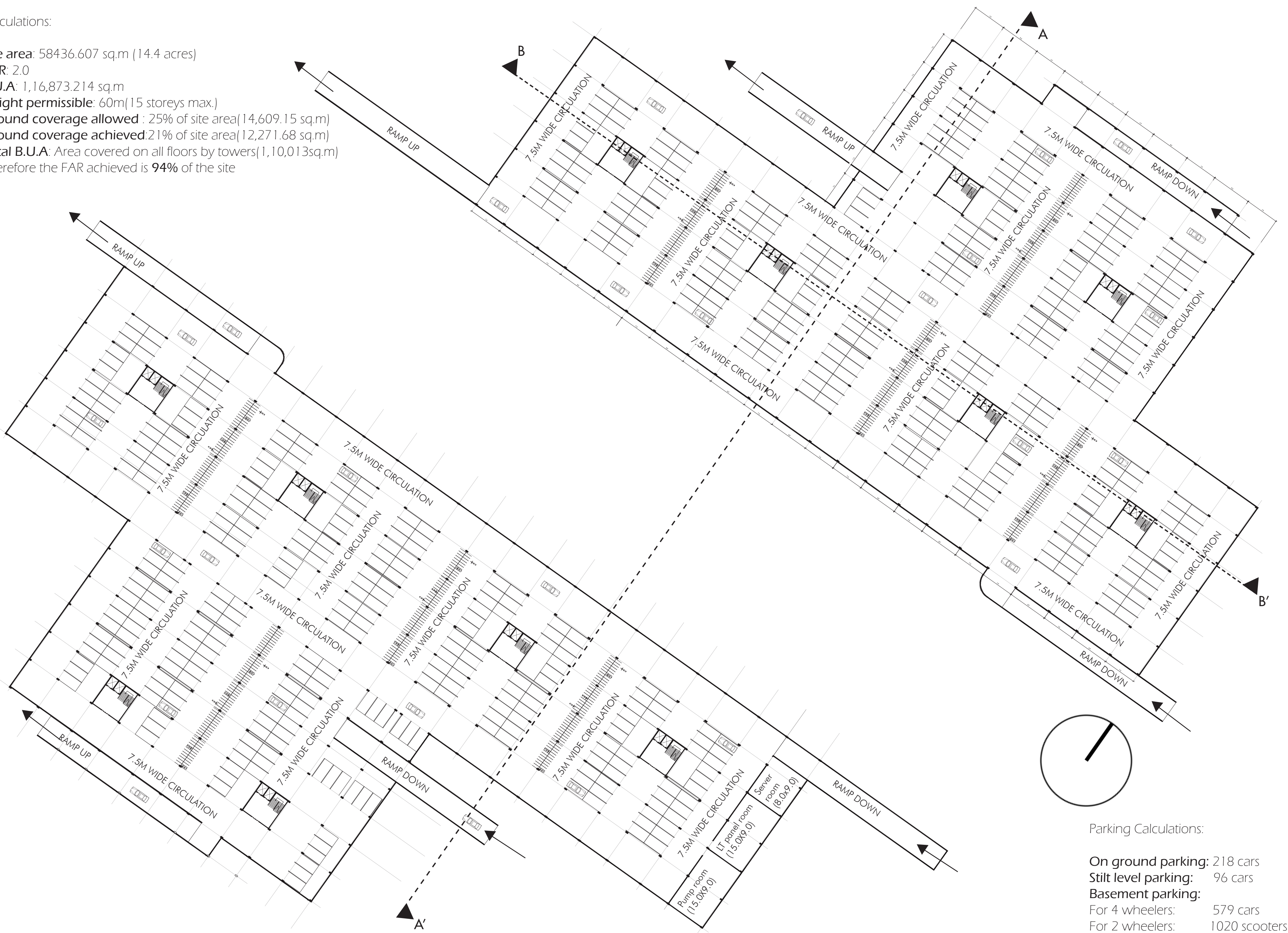
SECTION BB'
SCALE 1:1000

Architettura Design -VII

Architettura Design -VII

Calculations:

Site area: 58436.607 sq.m (14.4 acres)
 FAR: 2.0
 B.U.A: 1,16,873.214 sq.m
 Height permissible: 60m (15 storeys max.)
 Ground coverage allowed: 25% of site area (14,609.15 sq.m)
 Ground coverage achieved: 21% of site area (12,271.68 sq.m)
 Total B.U.A: Area covered on all floors by towers (1,10,013sq.m)
 Therefore the FAR achieved is 94% of the site

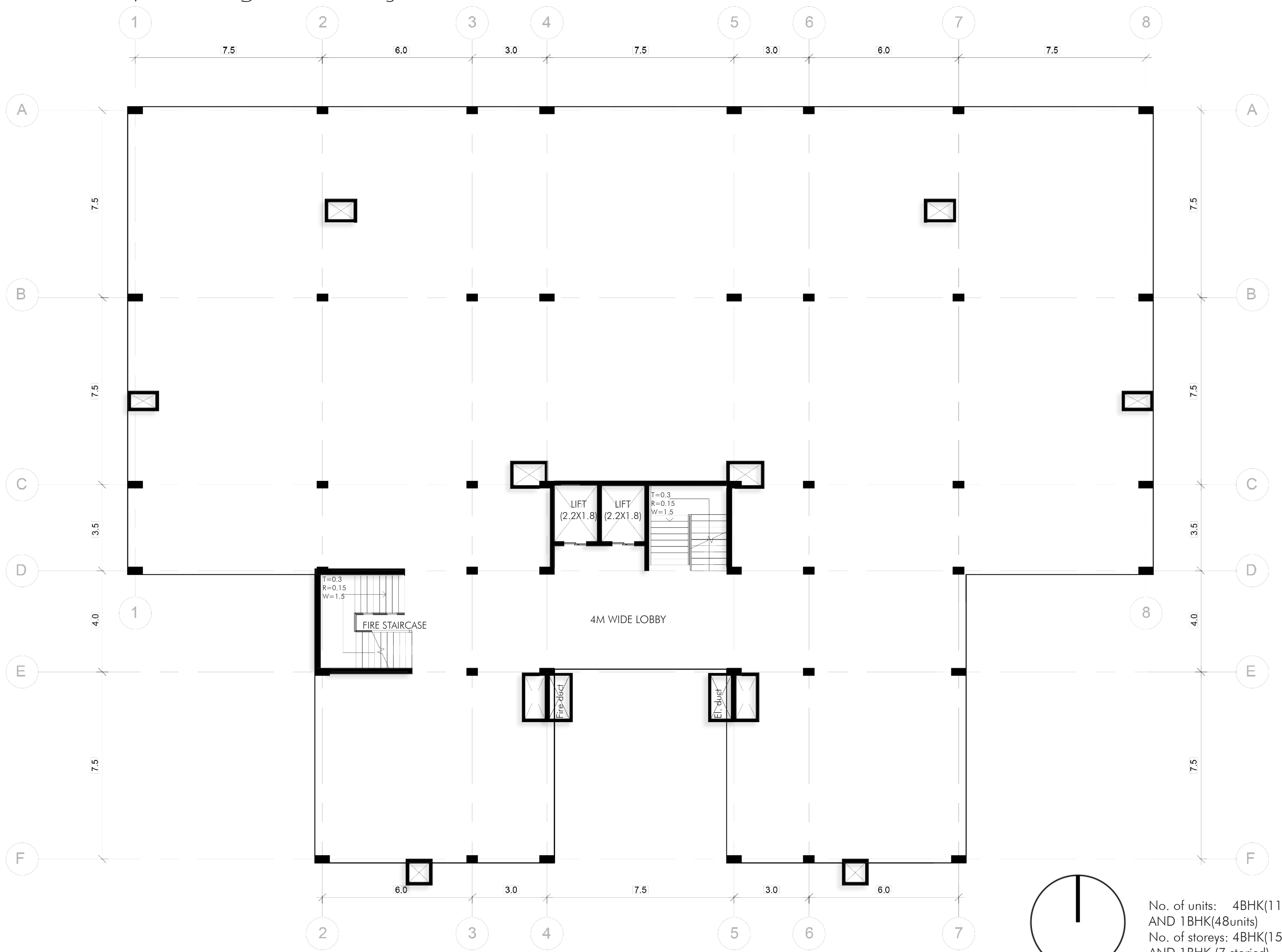


Parking Calculations:

On ground parking: 218 cars
 Stilt level parking: 96 cars
 Basement parking:
 For 4 wheelers: 579 cars
 For 2 wheelers: 1020 scooters

BASEMENT PLAN
 SCALE 1:1000





No. of units: 4BHK(112units)
AND 1BHK(48units)
No. of storeys: 4BHK(15 storied)
AND 1BHK (7 storied)

TYPICAL GROUND FLOOR PLAN (4BHK-1BHK CLUSTER)
SCALE 1:100

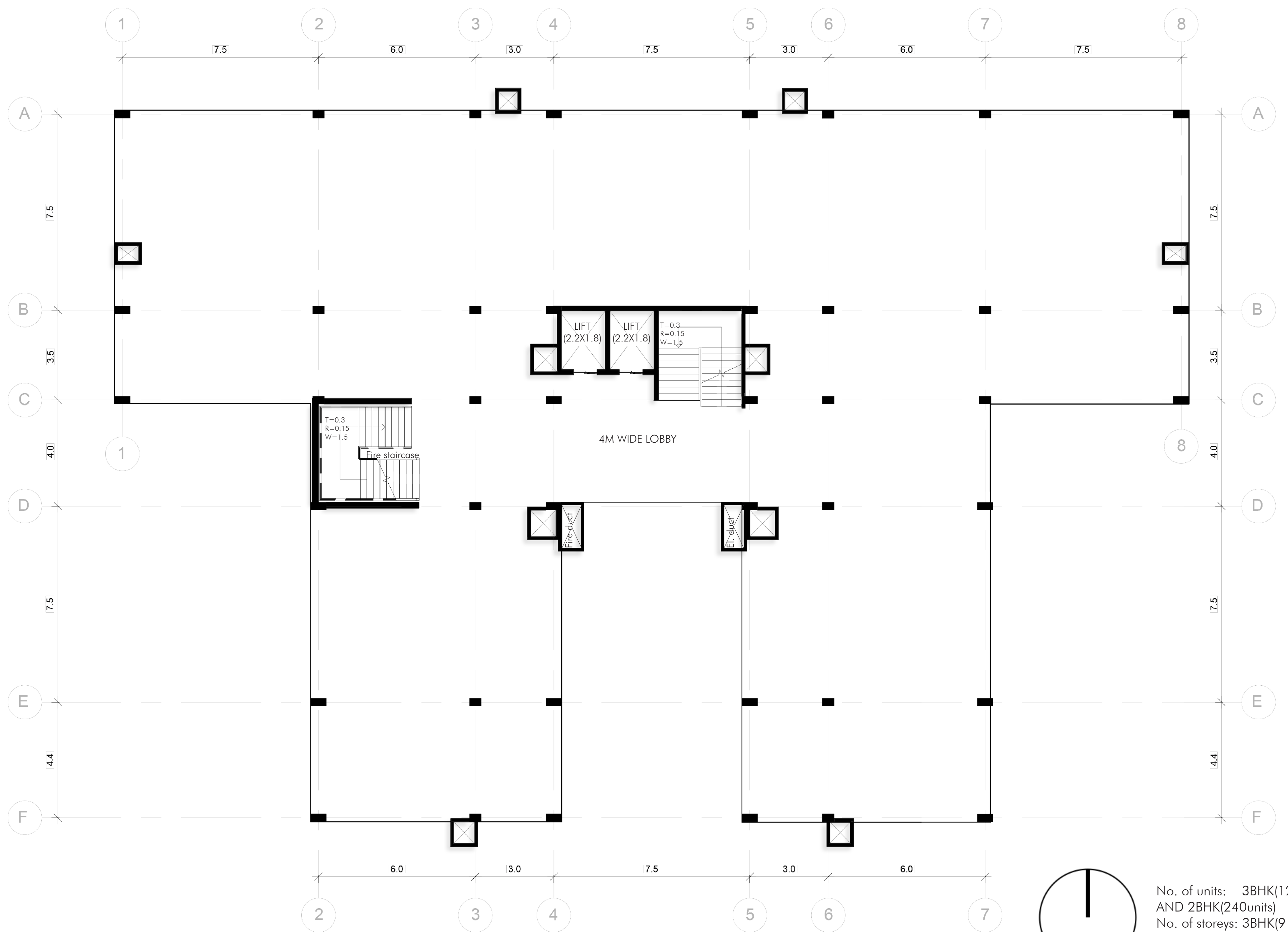


4BHK FACADE
SCALE 1:200



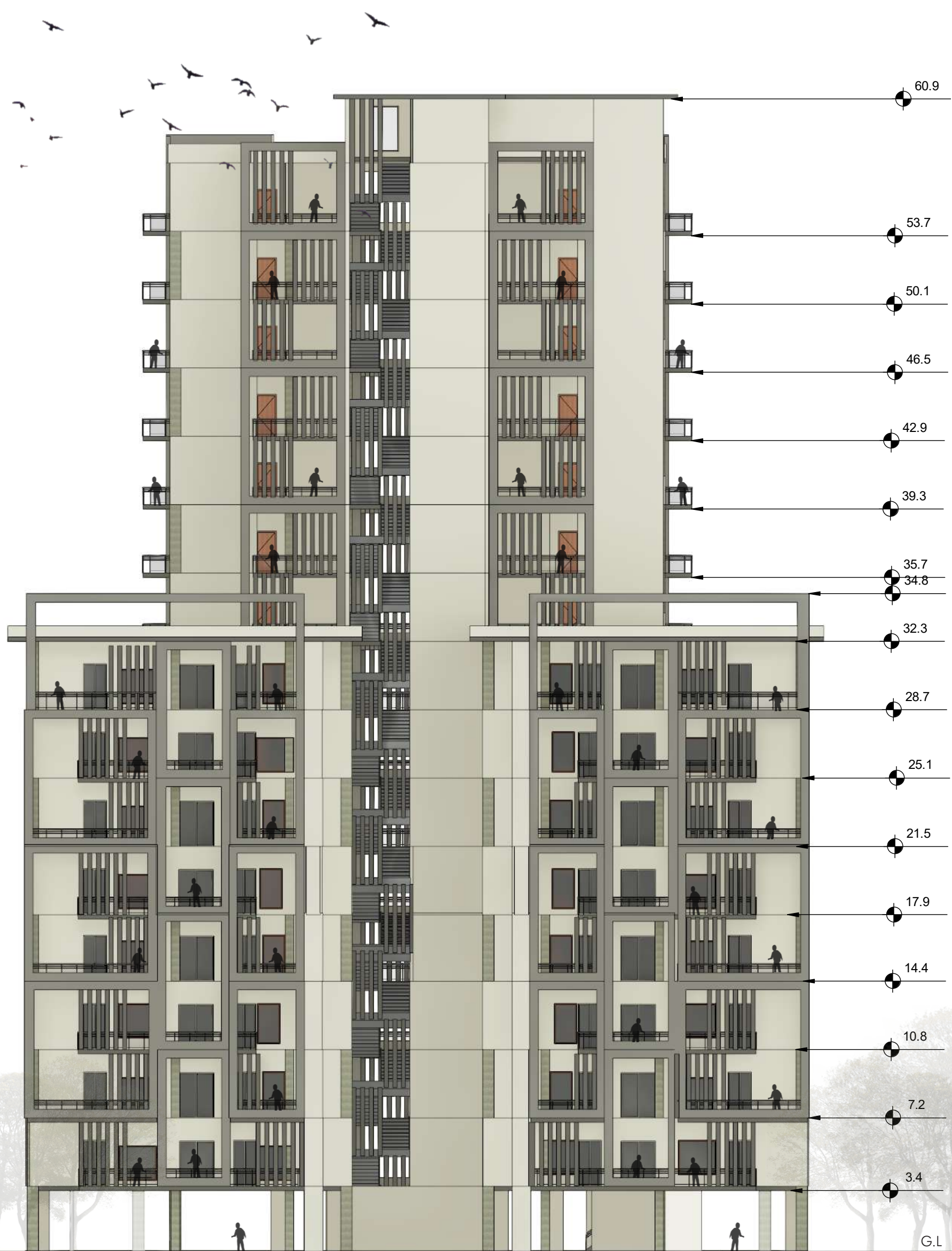
1BHK FACADE
SCALE 1:200





TYPICAL GROUND FLOOR PLAN (3BHK-2BHK CLUSTER)
SCALE 1:100

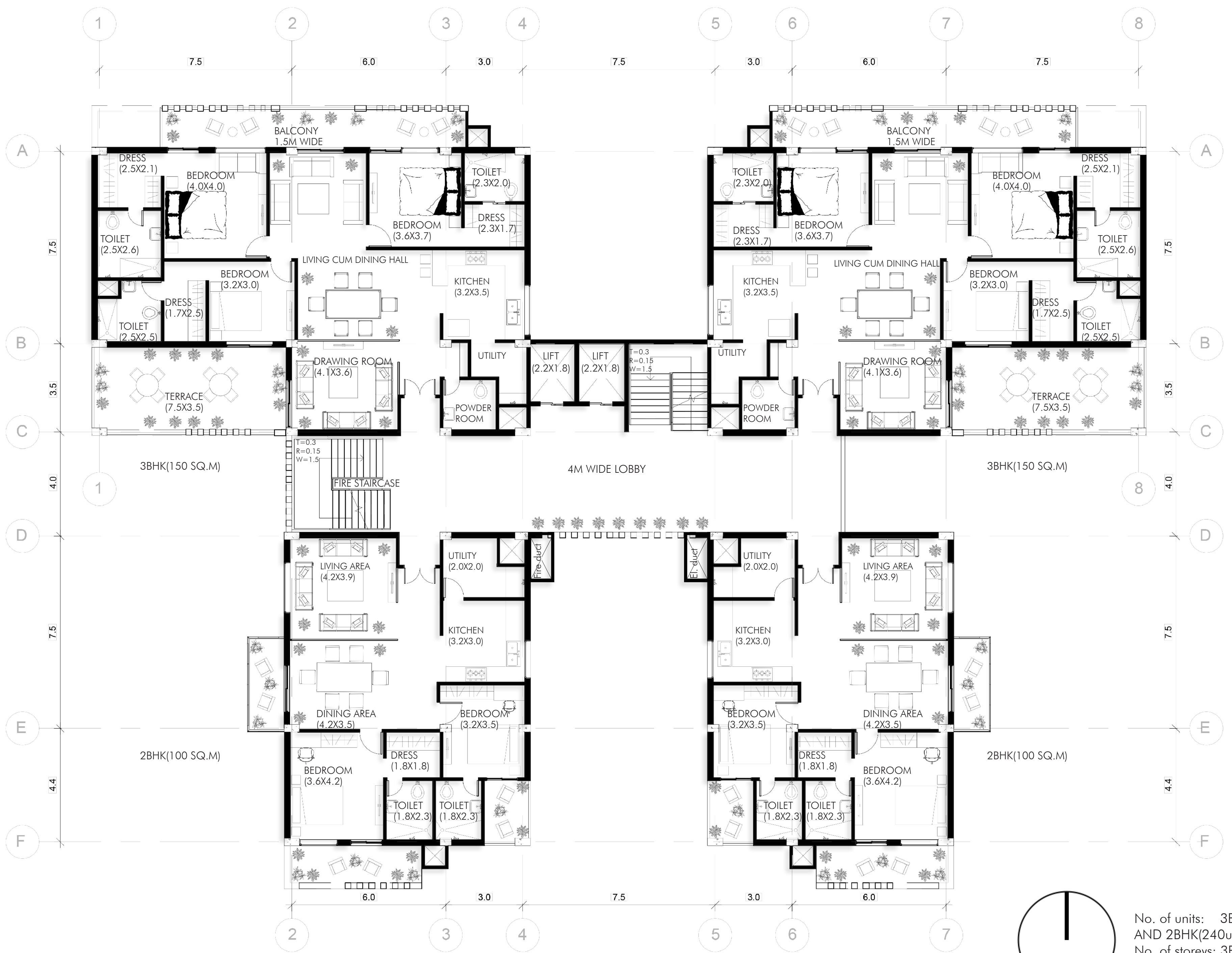
No. of units: 3BHK(128units)
AND 2BHK(240units)
No. of storeys: 3BHK(9 storied)
AND 2BHK (16 storied)



3BHK FACADE
SCALE 1:200



2BHK FACADE
SCALE 1:200



No. of units: 3BHK(128units)
AND 2BHK(240units)
No. of storeys: 3BHK(9 storied)
AND 2BHK (16 storied)

TYPICAL ODD FLOOR PLANS (3BHK-2BHK CLUSTER)

SCALE 1:100



TYPICAL EVEN FLOOR PLANS (3BHK-2BHK CLUSTER)

SCALE 1:100



Architectura Design -VIII

Architectural Design -VIII