

# EXPERIMENTAL SOCIAL HOUSING

## HORIZONTAL SCRAPER FOR URBAN POOR

Project Site - Talegaon waterbanks, Pune India  
Mentor - Prof. Sujaysen Gupta, Ar. Sumil Kaur  
Timeline - Architectural Design Studio IX  
Collaborators - Individual Project

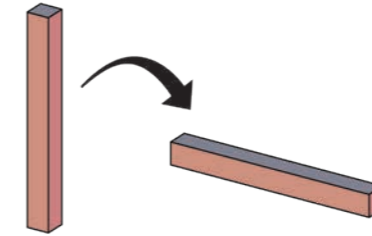
### HORIZONTAL SCRAPER FOR URBAN POOR

The housing design was conceived with the explicit goal of fostering unity among diverse communities, bridging gaps that often exist between socio-economic classes, different family structures, and various demographics, including variations in gender, sexual orientation, religion, caste, and skin color. Recognizing that people with diverse backgrounds often lead distinct lives, the design aimed to create a harmonious environment where these differences coexist, contributing to a tolerant and inclusive society.

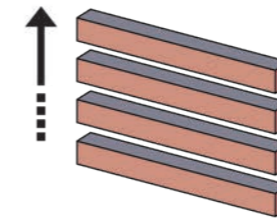
The housing design prioritizes an integrated approach, seamlessly intertwining outdoor spaces with circulation areas. Carefully planned views compel residents to witness the dynamic scenes of the streets and courtyards, fostering a deeper connection with the surrounding environment.



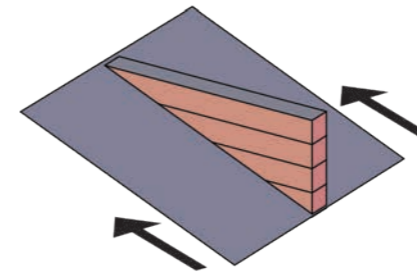
The deliberate intermingling of terraces and balconies is strategically designed to encourage social interaction, compelling people to share smiles and greetings as they navigate the communal spaces. This intentional design creates a sense of openness and community, enhancing the overall living experience.



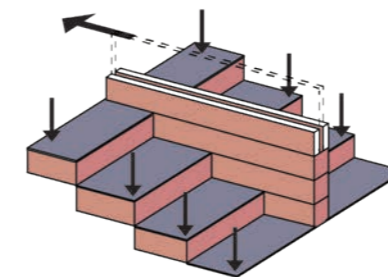
Flipping to make tower horizontal



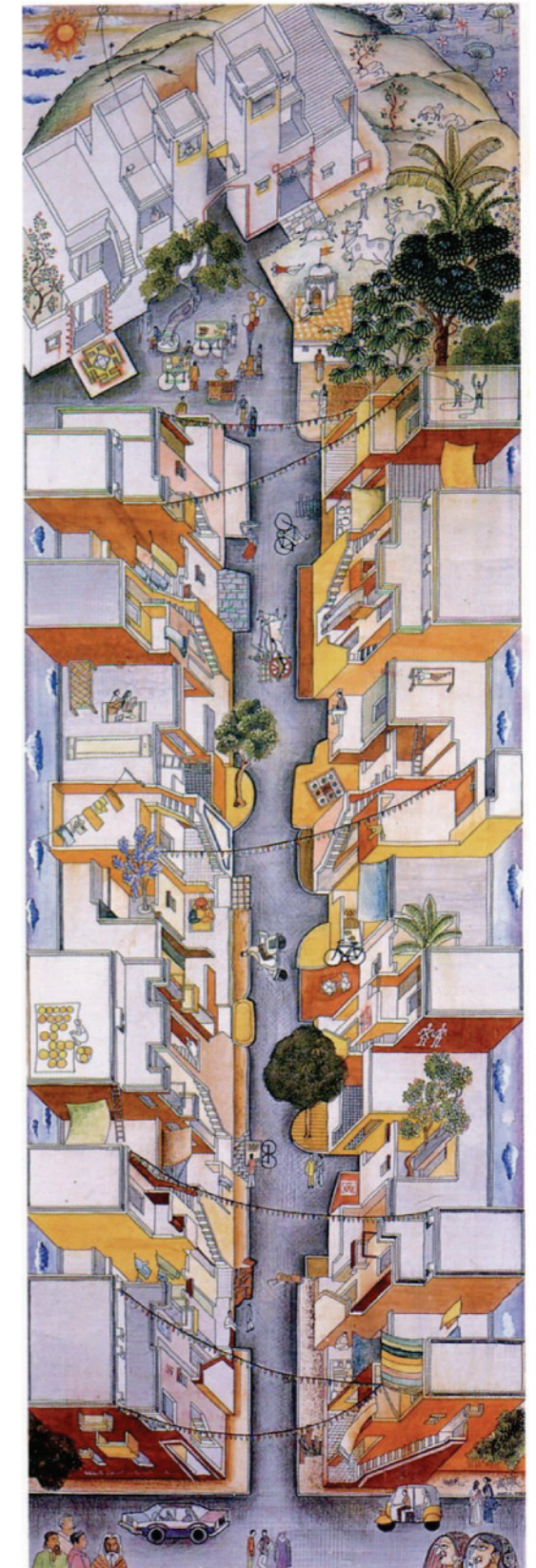
Multiplying towers according to site topography



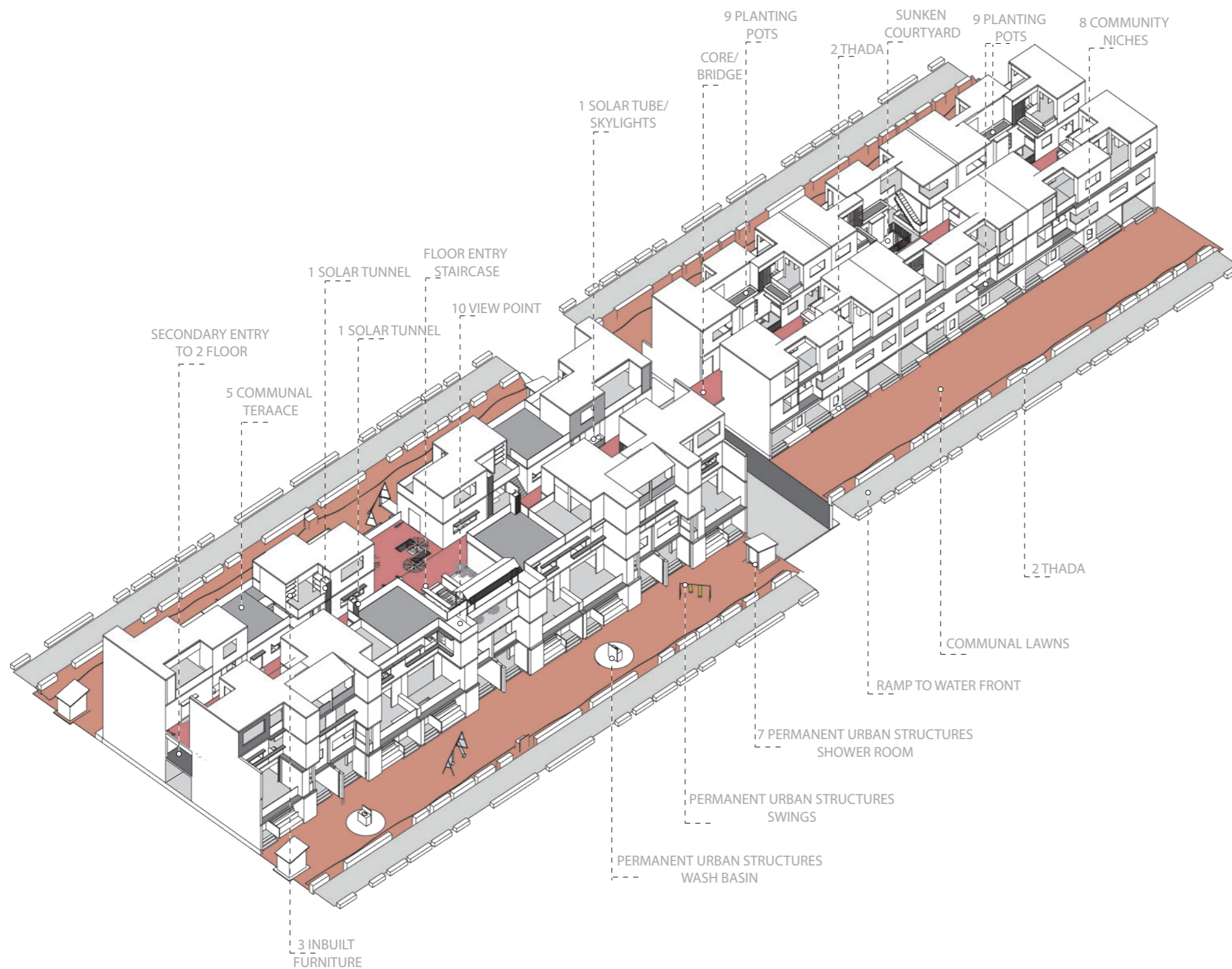
Slicing towers into the site gradient



Stepping grade to get courtyards and lawns. Carving out streets in the top to let tower breathe.



\*BV Doshi Aranya Housing

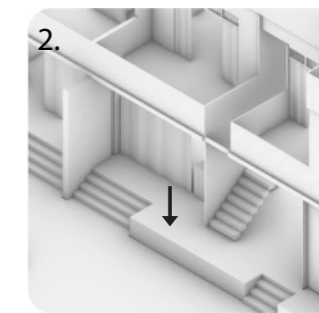


## PROTOTYPE HOUSING TOWER

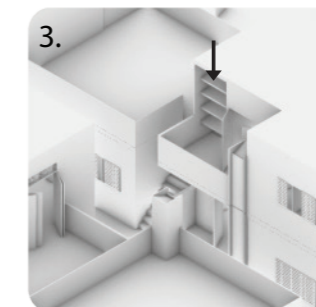
The prototype tower is intelligently divided into two sections, comprising three stories and four stories, respectively. Access to the initial three stories is provided directly from the street, while entry to the lower levels is facilitated through the walkway in the neighboring courtyards. Each house within the tower is designed with its unique identity, allowing ample room for personalization. Despite the individuality in design, the incorporation of similar layouts across the units contributes to affordability, ensuring a harmonious balance between distinctive character and economic feasibility.



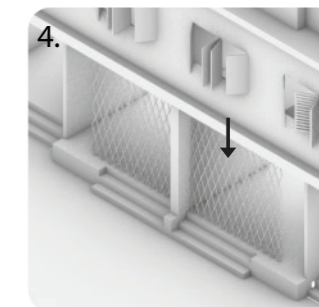
1. SOLAR TUNNEL



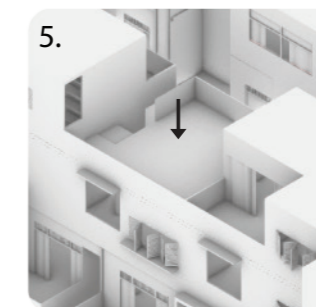
2. THADA



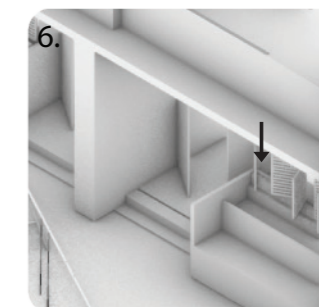
3. INBUILT FURNITURE



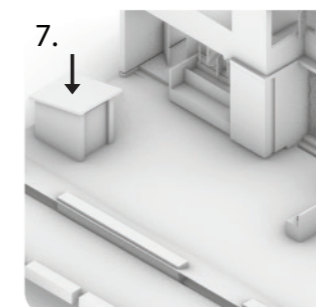
4. FOLDABLE STEEL GATES



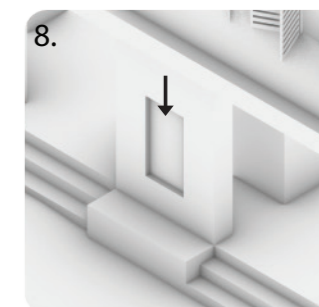
5. COMMUNITY TERRACES



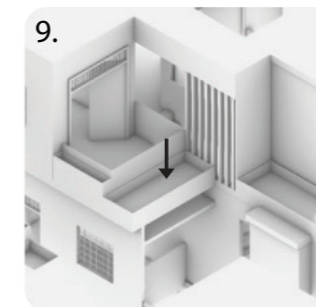
6. MINI VEGETABLE GARDENS



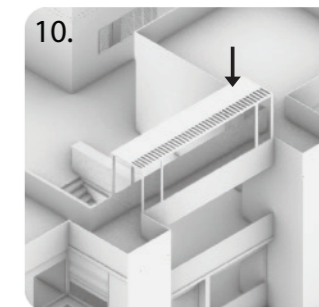
7. COMMUNITY BATHROOMS



8. COMMUNITY NICHES



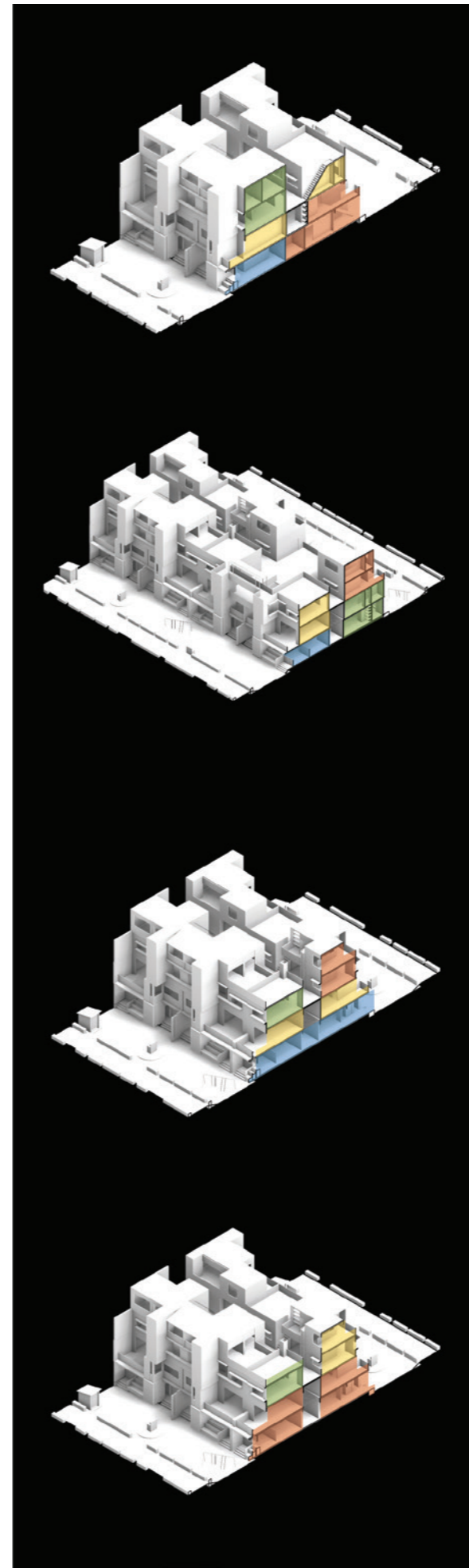
9. IN BUILT PLANTING POTS



10. VIEWING SPOTS

## ELEMENTS OF VERNACULAR ARCHITECTURE

This housing project is located in a tier II town, where residents are embracing modernity while valuing their traditional lifestyle. The design integrates vernacular elements with a modern touch, creating a harmonious blend that caters to both functional needs and cultural heritage.



Studio
  2 BHK
  1 BHK
  3 BHK

