

TABLEAU MAKING for Chandigarh Administration

Responsibility : Team Head
Design and Execution

Guide : Artist Bheem Malhotra
Chairman Chandigarh Lalit kala Academy



Chandigarh - Sectors of Architectural Importance

Decoding Corbusier's Chandigarh Elements of Architecture

PHASE 1 of tableau making was to form a concept and a narrative for the approval for the project.

Elements of architecture were taken as the theme to represent CCA in Republic day parade. Different sectors were visited to study the building elements of Corbusier and his team.



* All Images are under CCA copyrights



Tableau Goal
Client
Viewership

To Represent CCA at Republic Day Parade
Chandigarh Administration
6.3k



Facade Design

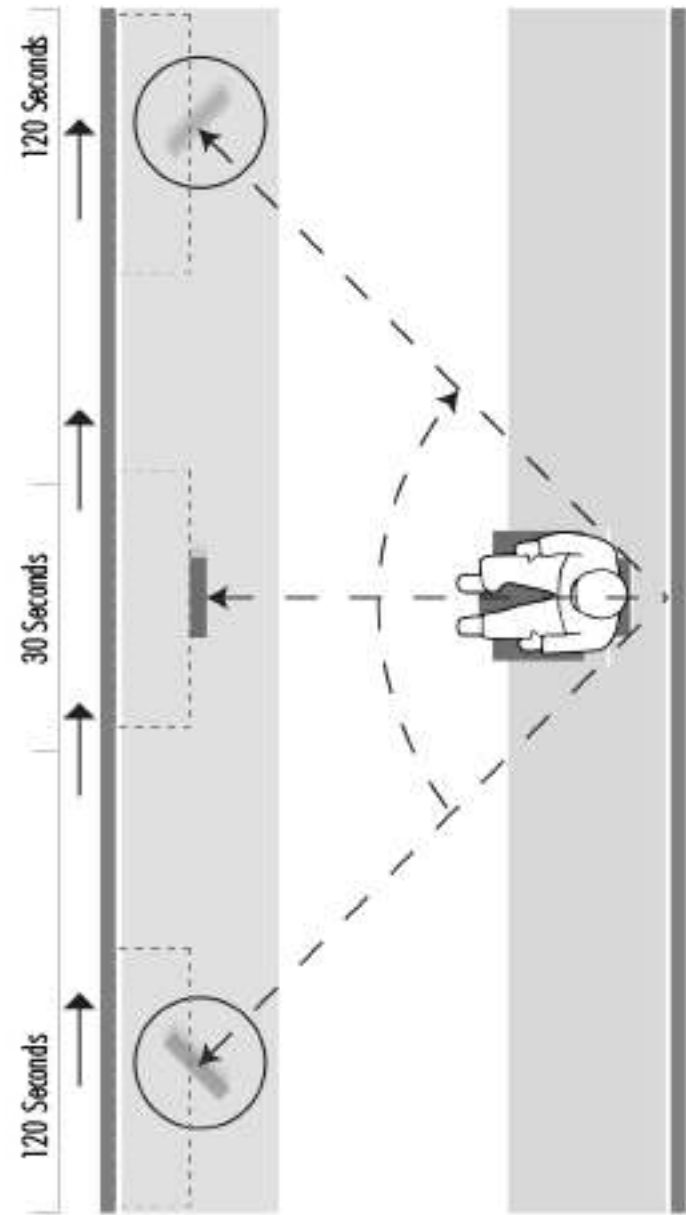
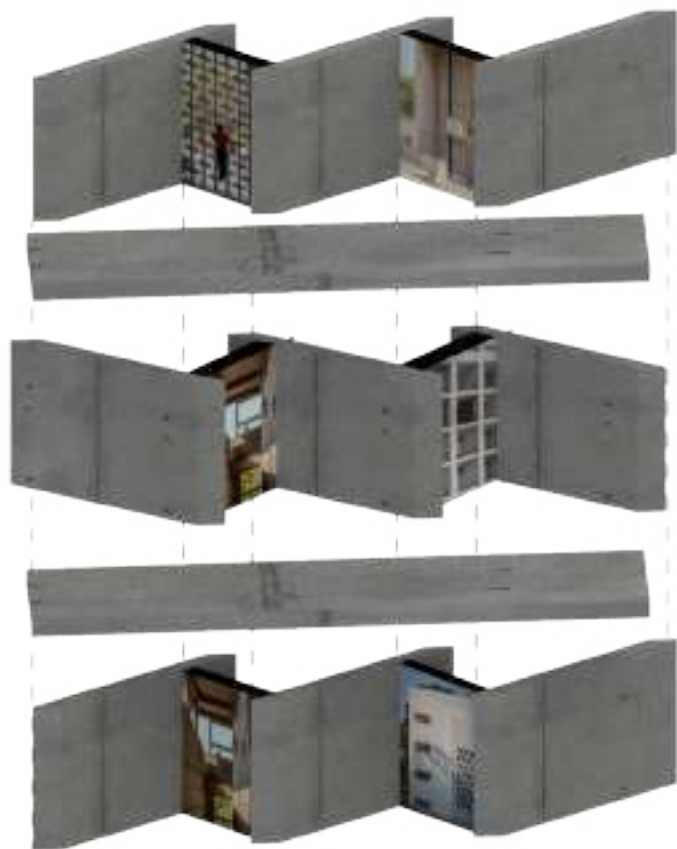
CHANDIGARH COLLEGE OF ARCHITECTURE



Elements Used in facade



Louvers | Photographs



Why not parallel display ?

The viewer spends more time viewing tableau car when it is at an angle than when it's parallel to him. So photographs are added in between the cement louvers at specific viewing angles. At perfect parallel view, one can only see concrete louvers which are the essence of architecture in the city.

Self Analysis | Criticism

- To complete the entire project within four days from design to execution was the major challenge. Due to time restrictions, design was kept realistic and too many experimentations were avoided.
- Due to the time restraints, the cost of the tableau shoot up to almost twice of the allotted cost.
- Labour too went double of our anticipation that too with the help of experts on carpentry and photography.
- Major learning: Making realistic designs without much experiments does not mean we can't be creative in our designs.
- End moment inputs from the team can be sometimes life savours!

Support Team



TIME	
Allotted	96 HOURS
Taken	80 HOURS
EXPENDITURE	
Allotted	600 USD
Taken	1000 USD
LABOUR	
Anticipated	7-8
Required on site	14 (with experts)

